

Spuddler

I notice that this walk was first published in 2008. Not much has changed but it has been updated. This walk has more than average architectural interest.

ENMORE **Distance:** 4 miles. Walking time about 1¼ h

Conditions: Easy walking. Some parts might be a bit wet. Some electric fences across paths when I did it.

Refreshments: Tynte Arms. (Usual pub times) Lamb (not Mondays or weekday lunchtimes). The Community Stores (weekdays & Sat to 7, Sun to 12)

Start: Spaxton Village Hall car park

Turn L out of the car park and very shortly turn R down the green lane. When this ends follow the field edge keeping the hedge on your R. When the hedge turns L follow the electric wires across the field and then across 2 stiles. You are now close to Clerk's Cottage. This is one of the oldest houses in the parish with bits dating to the 14th century and Tudor wall paintings. It's a remarkable survival as it was little more than a cowshed for more than 50 years. It has now been restored using authentic materials and a lot of skill.

The path runs slightly to the L over a stile and then bears L to the far corner of the field where it joins Barford Road. Turn R on the road and pass Barford House. On the way look out for the wooden building on staddle stones and the walled garden at the rear of the house. The grounds also contain water features and magnificent trees. The house has been considerably updated recently but the exterior remains a fine unaltered mid-18th century country house.

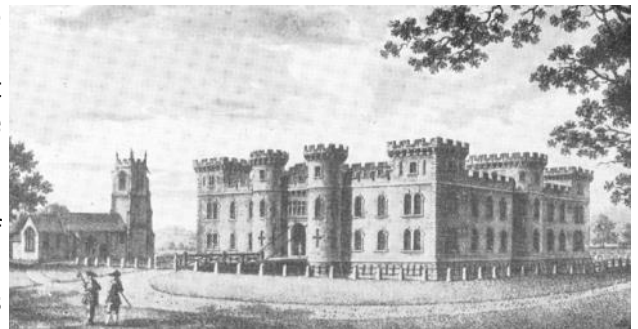
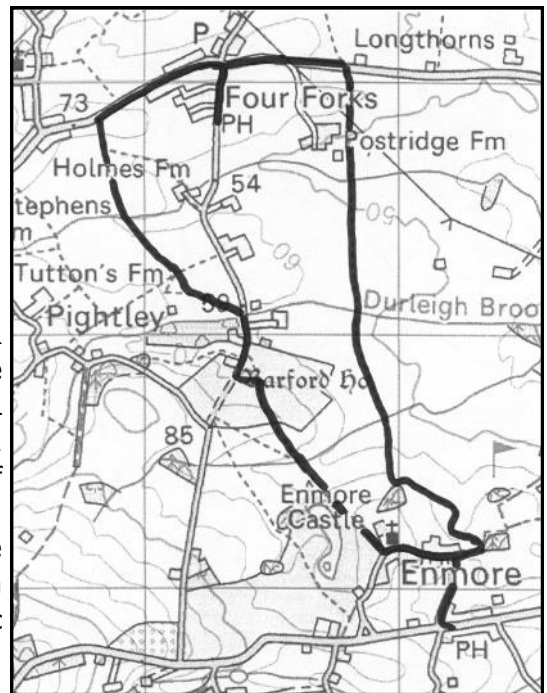
Just beyond Barford house cross the stile on the L. Head for a marker post in the old trees and turn R towards an opening through the wall of the estate. Now you can see the next point of interest, Enmore Castle. The path heads more or less straight towards it down a hill, across a stream and up to the L of a wood and a large pond. Near the castle keep close to the fence on your R until you reach the road. The castle was the grandiose design of the Earl of Egmont in the 1750s with towers, courtyard, and working drawbridge. Most of the castle was demolished in 1835 and shortly afterwards the estate, which included much of Spaxton, was sold.

What we see now is a rebuilt fraction but most of the underground stables survive.

Turn L to the church. The oldest part is the 12th century doorway. Stop and have a look around. Opposite is Castle House with some unusual architectural features.

Follow the road to a sharp R bend. To the R leads to the Tynte Arms, named after the builder of Halswell House at Goathurst. Reviews are mixed! Straight on leads onto Enmore golf course.

Turn sharp left and keep close to the edge of the course until after 200 yards you get to a stile leading into a paddock. Follow the line to a small wood and then R on a track downhill to a gate below another pond. Head for an obvious and very old oak - it's worth a look - and beyond you'll see the way marked over a stream. This is Durleigh Brook. The route is then pretty well straight. It passes across a wet sunken track, over a field and then to the R of a hedge. After another wet bit you go uphill, still with the hedge on your L and near Postridge Farm go round to the R of a pond and follow the hedge to the road. Turn L back to Four Forks. Call in at The Lamb or carry on up the High Street to the car park and Spaxton Community Stores.



Enmore Castle in 1782